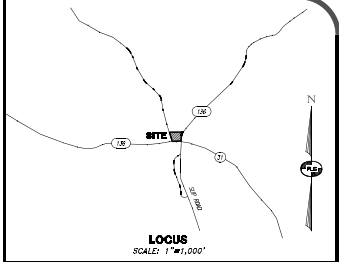


REFERENCE PLANS:

1. PLAN OF LAND - N - GREENFIELD, N.H. - SURVEYED FOR - PUMPS HEATING OILS, 1/4" = 30' SCALE 1-25-55 (DATED JUNE 4, 1955) PREPARED BY EDWARD H. WELDON AND RECORDED IN THE RECORD AS PLAN NO. 14952.
2. "CONSOLIDATION PLAN - LAND OF - SHELDON & BERNARD CARPES - MAP 19, LOTS 1 - SAWMILL ROAD & - FOREST ROAD (ON ROUTE 130) - TOWN OF GREENFIELD - GREENFIELD COUNTY, NEW HAMPSHIRE SCALE: 1/4" = 30' (DATED 12/15/07) PREPARED BY SCOTTAL R. BOSTON, INC. ENGINEERING AND SURVEYING AT THE RECORD AS PLAN NO. 93000.



NOTES:

1. THE CURRENT OWNER OF RECORD FOR TAX MAP V3 LOT 29 IS THE TOWN OF GREENFIELD, SHELLED PLACED GREENFIELD, NH 03047.
2. THE PURPOSE OF THIS PLAN IS TO DEPICT THE EXISTING CONDITIONS FOR TAX MAP V3 LOT 29 AS SHOWN.
3. THE TOTAL AREA OF TAX MAP V3 LOT 29 IS 1.82 ACRES PER THE TOWN TAX MAP.
4. OTHER FOR THE LOT IS "NONE". EXCEPT MINIMUM LOT REQUIREMENTS ARE 8.00 ACRES WITH 10 FEET FRONTAGE. THERE SHALL BE BETWEEN THE HEAVY END OF ANY PUBLIC HIGHWAY AND THE EXTREME POINT OF ANY BUILDING, A SETBACK AT LEAST EQUIVALENT TO THE BUILDING LINE CALCULATED BY AVERAGING THE GREAT LENGTH OF ALL STRUCTURES ON THE SAME SIDE OF THE ROAD A DISTANCE OF 500 FEET IN EITHER DIRECTION. MINIMUM BUILDING SETBACKS FROM SIDE AND REAR ARE 20'.
5. MAP V3 LOT 29 WAS REQUESTED FOR INCLUDES IN ACCORDANCE TO THE TOWN CORPS OF ENGINEERS VERTICAL CURVATURE SURVEY, TECHNICAL REPORT 107-11, AGREE WITH THE TOWN'S REGIONAL SUPPLEMENT TO CHAPTERS 2, 3 AND 4, C.A.S. OF THIS OFFICE, TWO NETWORK HOPE POINTS ON THE SUBJECT PROPERTY.
6. PARCEL LIES OUTSIDE OF THE 100 YEAR FLOOD HAZARD AREA PER FEMA FLOOD INSURANCE RATE MAP (FIRM) MAP NO. 330510002D, EFFECTIVE DATE 9/25/2005.
7. THE SURFACE FEATURES AND SITE TOPOGRAPHY SHOWN ARE THE RESULT OF AN ON-SITE FIELD SURVEY BY THIS OFFICE DURING THE MONTH OF FEBRUARY, 2022.
8. VERTICAL CURVATURE IS PER INTERPOLATED PLAN NO. 11002 HORIZONTAL VERTICAL DATUM IS NAVD83 PER A GPS CORRS SOLUTION.
9. ALL LOT LINES DEPICTED HEREIN ARE APPROXIMATE PER THE TOWN TAX MAPS.
10. THE GREENFIELD HEATING HOUSE IS A HISTORIC HEATING HOUSE ON FOREST ROAD IN THE CENTER OF GREENFIELD, NEW HAMPSHIRE. THE TWO-STORY-WOOD-FRAME BUILDING WAS BUILT IN 1837 BY GEORGE A. SMALL THOMAS OF GREENFIELD, NEW HAMPSHIRE. IN 1937, GEORGE A. SMALL THOMAS AND HIS WIFE BESSIE SMALL THOMAS DECEASED. THE BUILDING WAS LISTED ON THE NATIONAL REGISTER OF HISTORIC PLACES IN 1987.

TREE LEGEND:

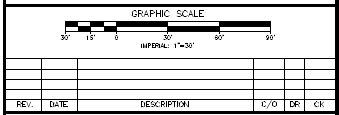
- EXISTING MATURE TREE
- EXISTING MATURE TREE
- EXISTING MATURE TREE
- EXISTING SHRUB
- EXISTING SHRUB
- EXISTING SPRUCE TREE

STRUCTURE DETAIL:

- CB 1 PA=62.94'
- CB 2 PA=54.20'
- CB 3 PA=57.44'
- CB 4 PA=67.24'

SIGN LEGEND:

- S1 - "TOP SIGN"
- S2 - "12 MPA"
- S3 - "NOT A THRU WAY" - "HEATING HOUSE TRAFFIC ONLY"
- S4 - "HEATING HOUSE RIGHT"
- S5 - "HEATING HOUSE LEFT"
- S6 - "24 LEFT FRONT 135 FEET"
- S7 - "24 LEFT FRONT 135 FEET"
- S8 - "TOWN MESSAGE BOARD"
- S9 - "TOWN HEATING HOUSE HISTORICAL"
- S10 - "TOWN HEATING HOUSE HISTORICAL"
- S11 - "TOWN HEATING HOUSE HISTORICAL"
- S12 - "TOWN HEATING HOUSE HISTORICAL"
- S13 - "TOWN HEATING HOUSE HISTORICAL"
- S14 - "TOWN HEATING HOUSE HISTORICAL"
- S15 - "TOWN HEATING HOUSE HISTORICAL"
- S16 - "TOWN HEATING HOUSE HISTORICAL"
- S17 - "TOWN HEATING HOUSE HISTORICAL"
- S18 - "TOWN HEATING HOUSE HISTORICAL"
- S19 - "TOWN HEATING HOUSE HISTORICAL"
- S20 - "TOWN HEATING HOUSE HISTORICAL"
- S21 - "TOWN HEATING HOUSE HISTORICAL"
- S22 - "TOWN HEATING HOUSE HISTORICAL"
- S23 - "TOWN HEATING HOUSE HISTORICAL"
- S24 - "TOWN HEATING HOUSE HISTORICAL"
- S25 - "TOWN HEATING HOUSE HISTORICAL"
- S26 - "TOWN HEATING HOUSE HISTORICAL"
- S27 - "TOWN HEATING HOUSE HISTORICAL"
- S28 - "TOWN HEATING HOUSE HISTORICAL"
- S29 - "TOWN HEATING HOUSE HISTORICAL"
- S30 - "TOWN HEATING HOUSE HISTORICAL"
- S31 - "TOWN HEATING HOUSE HISTORICAL"
- S32 - "TOWN HEATING HOUSE HISTORICAL"
- S33 - "TOWN HEATING HOUSE HISTORICAL"
- S34 - "TOWN HEATING HOUSE HISTORICAL"
- S35 - "TOWN HEATING HOUSE HISTORICAL"
- S36 - "TOWN HEATING HOUSE HISTORICAL"
- S37 - "TOWN HEATING HOUSE HISTORICAL"
- S38 - "TOWN HEATING HOUSE HISTORICAL"
- S39 - "TOWN HEATING HOUSE HISTORICAL"
- S40 - "TOWN HEATING HOUSE HISTORICAL"
- S41 - "TOWN HEATING HOUSE HISTORICAL"
- S42 - "TOWN HEATING HOUSE HISTORICAL"
- S43 - "TOWN HEATING HOUSE HISTORICAL"
- S44 - "TOWN HEATING HOUSE HISTORICAL"
- S45 - "TOWN HEATING HOUSE HISTORICAL"
- S46 - "TOWN HEATING HOUSE HISTORICAL"
- S47 - "TOWN HEATING HOUSE HISTORICAL"
- S48 - "TOWN HEATING HOUSE HISTORICAL"
- S49 - "TOWN HEATING HOUSE HISTORICAL"
- S50 - "TOWN HEATING HOUSE HISTORICAL"
- S51 - "TOWN HEATING HOUSE HISTORICAL"
- S52 - "TOWN HEATING HOUSE HISTORICAL"
- S53 - "TOWN HEATING HOUSE HISTORICAL"
- S54 - "TOWN HEATING HOUSE HISTORICAL"
- S55 - "TOWN HEATING HOUSE HISTORICAL"
- S56 - "TOWN HEATING HOUSE HISTORICAL"
- S57 - "TOWN HEATING HOUSE HISTORICAL"
- S58 - "TOWN HEATING HOUSE HISTORICAL"
- S59 - "TOWN HEATING HOUSE HISTORICAL"
- S60 - "TOWN HEATING HOUSE HISTORICAL"
- S61 - "TOWN HEATING HOUSE HISTORICAL"
- S62 - "TOWN HEATING HOUSE HISTORICAL"
- S63 - "TOWN HEATING HOUSE HISTORICAL"
- S64 - "TOWN HEATING HOUSE HISTORICAL"
- S65 - "TOWN HEATING HOUSE HISTORICAL"
- S66 - "TOWN HEATING HOUSE HISTORICAL"
- S67 - "TOWN HEATING HOUSE HISTORICAL"
- S68 - "TOWN HEATING HOUSE HISTORICAL"
- S69 - "TOWN HEATING HOUSE HISTORICAL"
- S70 - "TOWN HEATING HOUSE HISTORICAL"
- S71 - "TOWN HEATING HOUSE HISTORICAL"
- S72 - "TOWN HEATING HOUSE HISTORICAL"
- S73 - "TOWN HEATING HOUSE HISTORICAL"
- S74 - "TOWN HEATING HOUSE HISTORICAL"
- S75 - "TOWN HEATING HOUSE HISTORICAL"
- S76 - "TOWN HEATING HOUSE HISTORICAL"
- S77 - "TOWN HEATING HOUSE HISTORICAL"
- S78 - "TOWN HEATING HOUSE HISTORICAL"
- S79 - "TOWN HEATING HOUSE HISTORICAL"
- S80 - "TOWN HEATING HOUSE HISTORICAL"
- S81 - "TOWN HEATING HOUSE HISTORICAL"
- S82 - "TOWN HEATING HOUSE HISTORICAL"
- S83 - "TOWN HEATING HOUSE HISTORICAL"
- S84 - "TOWN HEATING HOUSE HISTORICAL"
- S85 - "TOWN HEATING HOUSE HISTORICAL"
- S86 - "TOWN HEATING HOUSE HISTORICAL"
- S87 - "TOWN HEATING HOUSE HISTORICAL"
- S88 - "TOWN HEATING HOUSE HISTORICAL"
- S89 - "TOWN HEATING HOUSE HISTORICAL"
- S90 - "TOWN HEATING HOUSE HISTORICAL"
- S91 - "TOWN HEATING HOUSE HISTORICAL"
- S92 - "TOWN HEATING HOUSE HISTORICAL"
- S93 - "TOWN HEATING HOUSE HISTORICAL"
- S94 - "TOWN HEATING HOUSE HISTORICAL"
- S95 - "TOWN HEATING HOUSE HISTORICAL"
- S96 - "TOWN HEATING HOUSE HISTORICAL"
- S97 - "TOWN HEATING HOUSE HISTORICAL"
- S98 - "TOWN HEATING HOUSE HISTORICAL"
- S99 - "TOWN HEATING HOUSE HISTORICAL"
- S100 - "TOWN HEATING HOUSE HISTORICAL"



REV.	DATE	DESCRIPTION	C/O	DR	CL

EXISTING CONDITIONS PLAN
TAX MAP V3 LOT 30
1776 FOREST ROAD
GREENFIELD, NEW HAMPSHIRE
PREPARED FOR:
SHELDON PENNOYER ARCHITECTS, PLLC
64 NORTH MAIN STREET #1, CONCORD, NH 03301
LAND OF:
TOWN OF GREENFIELD
7 SAWMILL ROAD, GREENFIELD, NH 03047
SCALE: 1" = 30' **MARCH 1, 2023**
 Surveying + Engineering + Land Planning + Permitting + Septic Designs

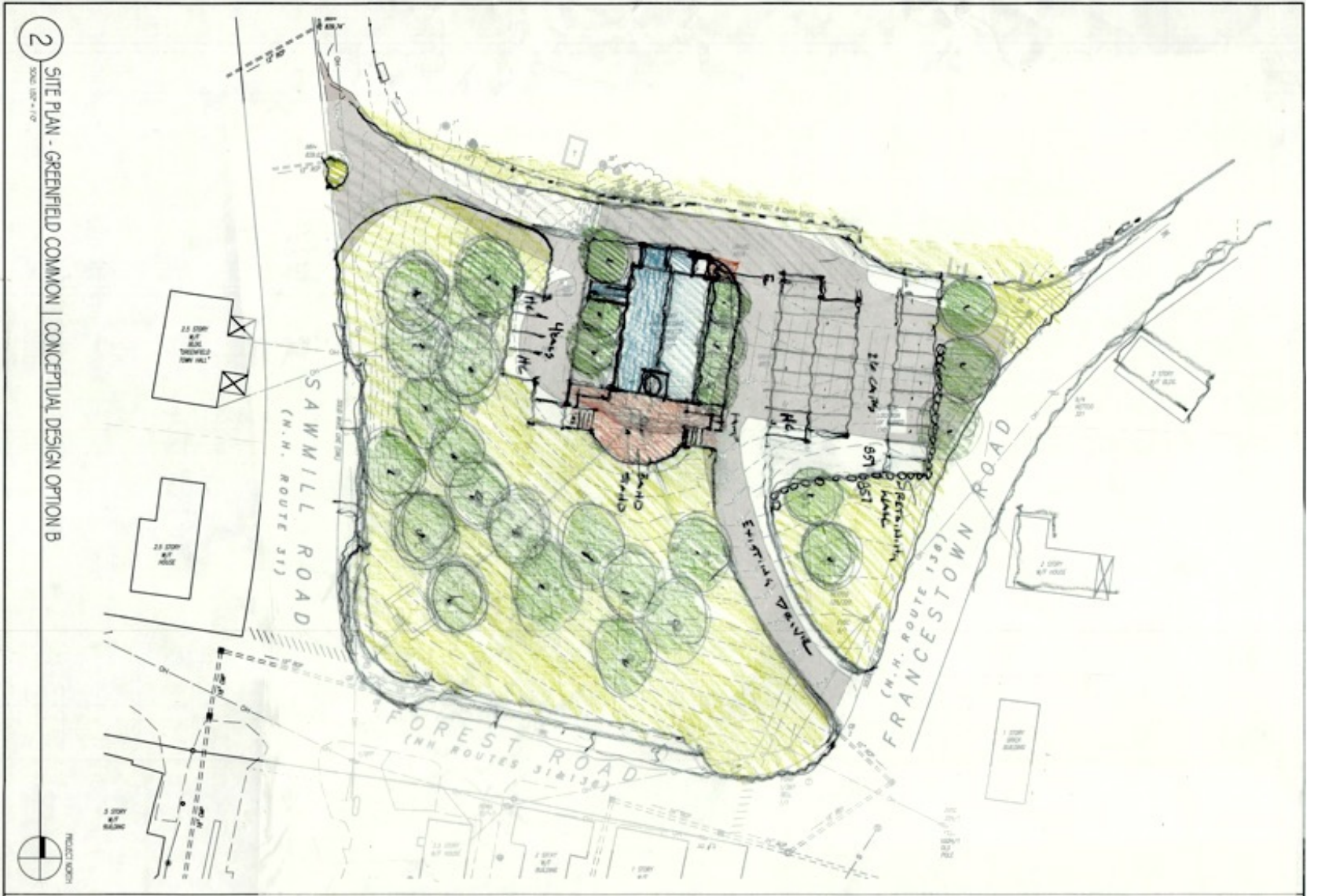
FIELDSTONE
LAND CONSULTANTS, PLLC

280 Elm Street, Mill Pond, NH 03055
 Phone: (603) 672-5456 Fax: (603) 413-5456
 www.FieldstoneLandConsultants.com

FILE: 2207200-90 PPA# NO.: 250700 SHEET NO.: 1 OF 1



OPTION B



**Miaszek
Turpin
P L L C**

One Mill Plaza
Laconia, New Hampshire
03246
(x) 603.527.1617
(f) 603.527.1618
miaszekturpin.com

GREENFIELD MEETINGHOUSE
Town of Greenfield
Forest Road
Greenfield, New Hampshire

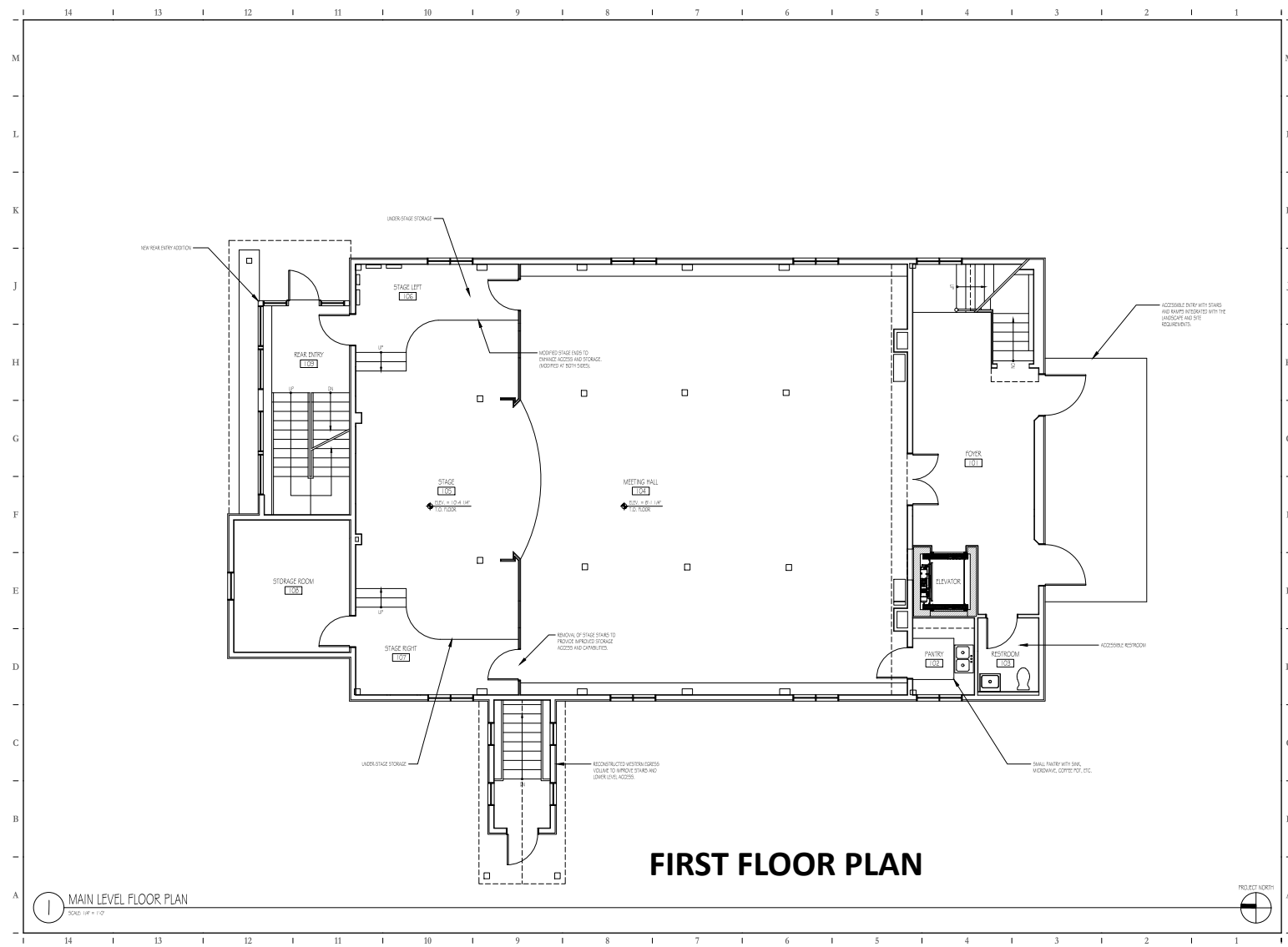
PROGRESS PRINT
DATE: 03/08/2023
NOT FOR CONSTRUCTION

DATE	DESCRIPTION
03/08/2023	ISSUED FOR PERMIT
03/08/2023	ISSUED FOR CONSTRUCTION

NEW WORK
MAIN LEVEL
FLOOR PLAN

DATE:	03/08/2023
SCALE:	AS NOTED
DRAWN BY:	SMI, JAC
PROJECT NUMBER:	2021

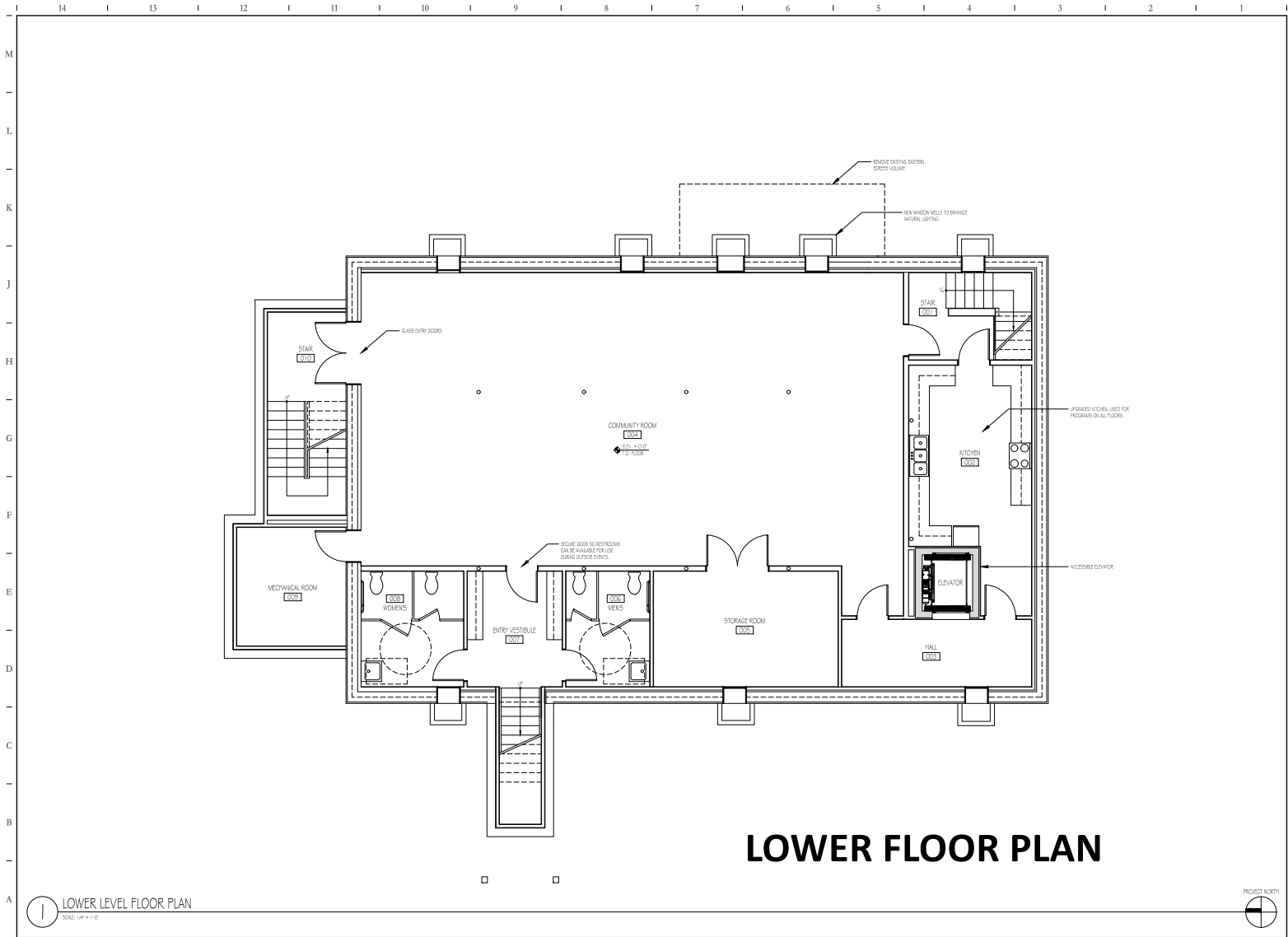
A1.02
2021 Drawing(03/08/2023) Plans.dwg



FIRST FLOOR PLAN

1 MAIN LEVEL FLOOR PLAN
SCALE: 1/8" = 1'-0"





LOWER FLOOR PLAN

1 LOWER LEVEL FLOOR PLAN
SCALE: 1/8" = 1'-0"



**Misiaszek
Turpin
P L L C**

One Mill Plaza
Laconia, New Hampshire
0 3 2 4 6
(t) 6 0 3 . 5 2 7 . 1 6 1 7
(f) 6 0 3 . 5 2 7 . 1 6 1 8
misiaszekturpin.com

GREENFIELD MEETINGHOUSE
Town of Greenfield
Forest Road
Greenfield, New Hampshire

PROGRESS PRINT
DATE: 03/08/2023
NOT FOR CONSTRUCTION

DATE	03/08/2023
SCALE	AS NOTED
DRAWN BY	SJM, JAC
PROJECT NUMBER	2201

NEW WORK
LOWER LEVEL
FLOOR PLAN

DATE	03/08/2023
SCALE	AS NOTED
DRAWN BY	SJM, JAC
PROJECT NUMBER	2201

A1.01

2201 Drawing 02201 PLANS.dwg

GREENFIELD MEETINGHOUSE
Town of Greenfield
Forest Road
Greenfield, New Hampshire

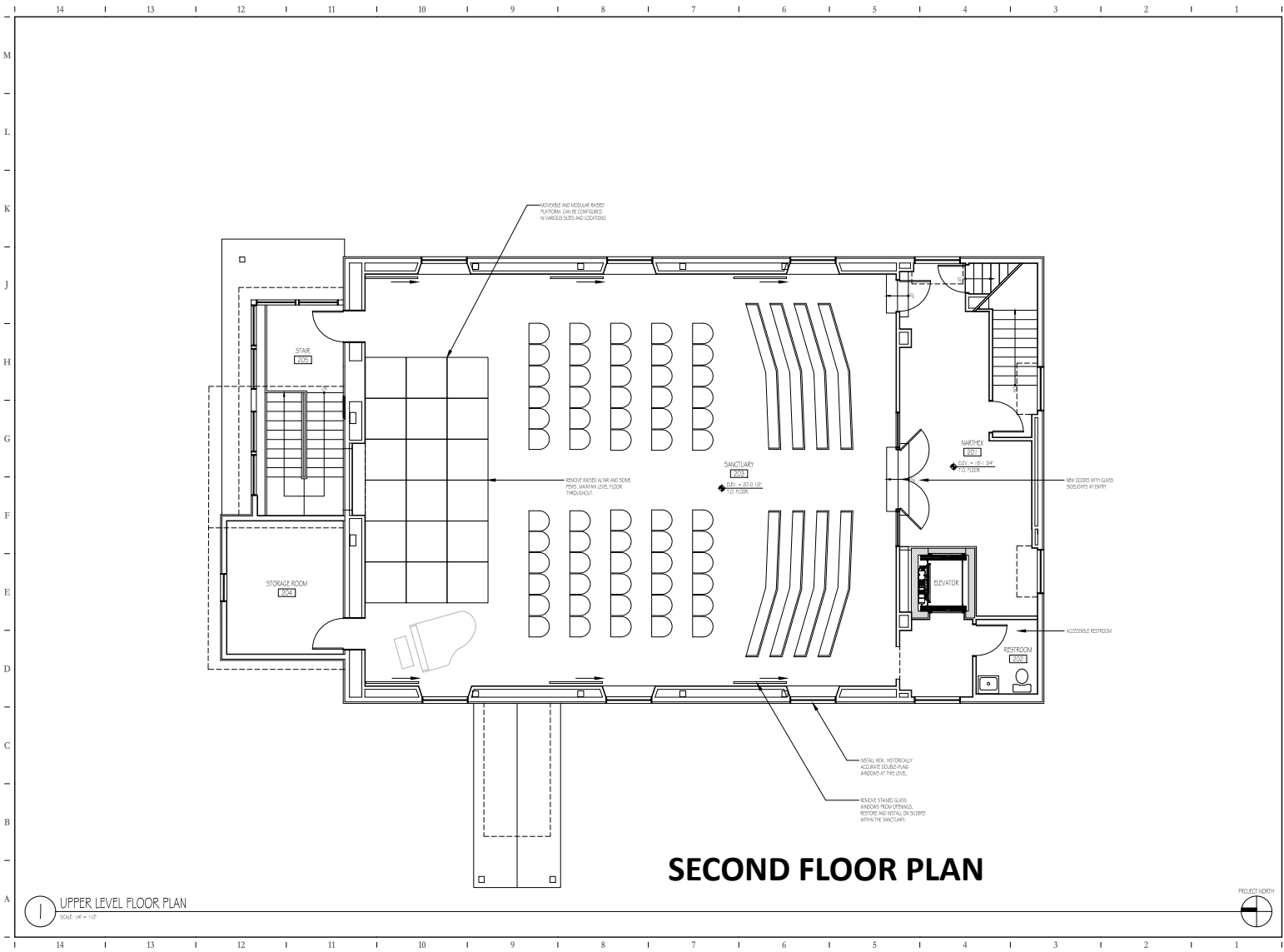
PROGRESS PRINT
DATE: 03/08/2023
NOT FOR CONSTRUCTION

DATE	DESCRIPTION	BY

NEW WORK
UPPER LEVEL
FLOOR PLAN

DATE	DESCRIPTION

A1.03
2021-09-09-03-03-01 - FINAL



1 UPPER LEVEL FLOOR PLAN
SCALE: 1/4" = 1'-0"







**Miaszek
Turpin
P L L C**

One Mill Plaza
Laconia, New Hampshire
0 3 2 4 6
(v) 603.527.1617
(f) 603.527.1618
miaszekturpin.com

GREENFIELD MEETINGHOUSE
Town of Greenfield
Greenfield, New Hampshire

DATE	DESCRIPTION	DATE

New Construction
**EXTERIOR EAST
ELEVATION**

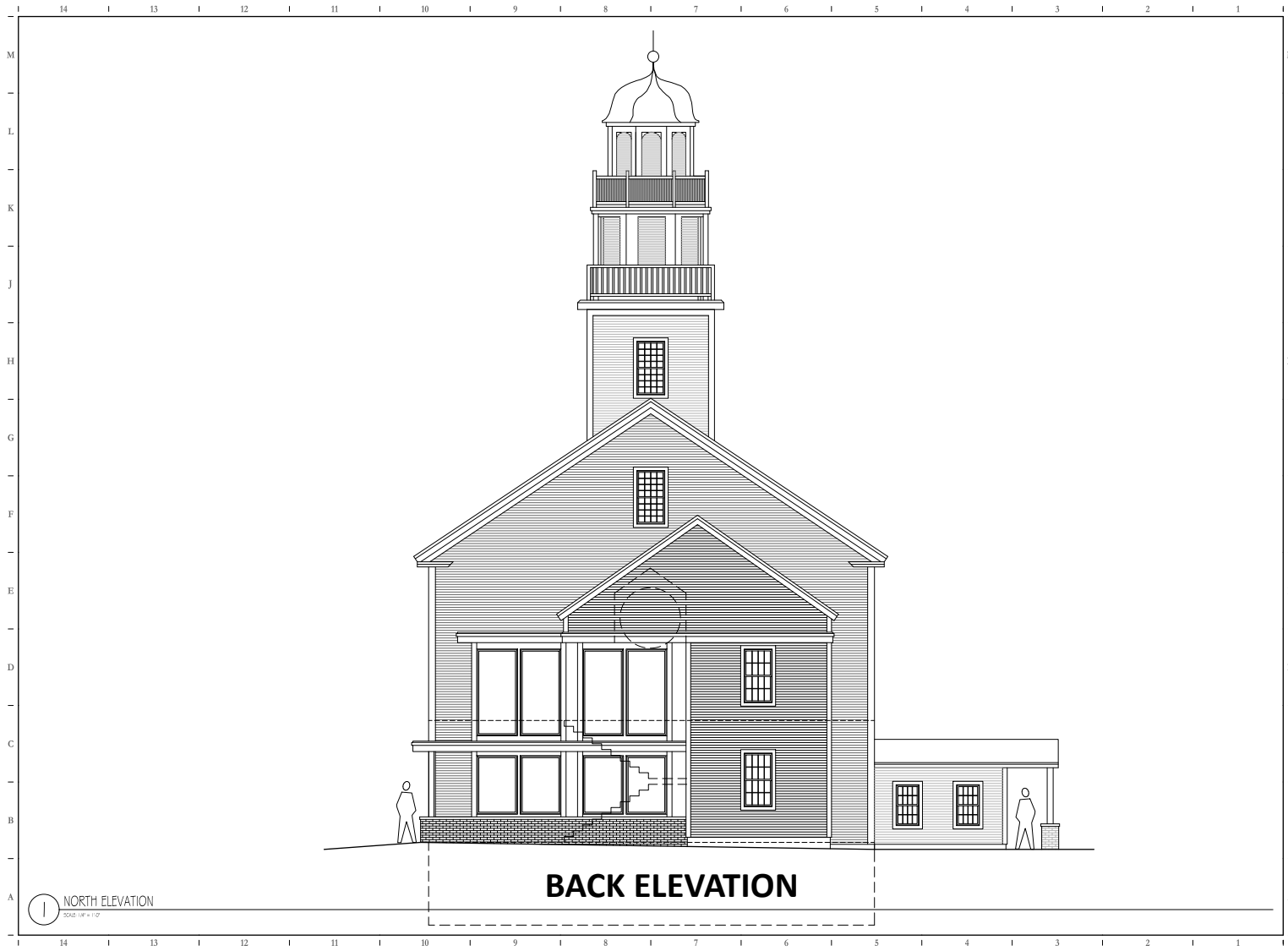
DATE	DESCRIPTION

A2.04

12/11/2019 09:00:00 1/10/20

EAST ELEVATION
SCALE 1/8" = 1'-0"

EAST ELEVATION



M
L
K
J
H
G
F
E
D
C
B
A

**Miaszek
Turpin**
p l l c

One Mill Plaza
Laconia, New Hampshire
0 3 2 4 6
(r) 603.527.1617
(f) 603.527.1618
miaszekturpin.com

GREENFIELD MEETINGHOUSE
Town of Greenfield
Forest Road
Greenfield, New Hampshire

OWNER	2025
DESIGNER	MIASZKE TURPIN, PLLC
TITLE	DESCRIPTION
DATE	03/03/2025
SCALE	AS SHOWN
PROJECT NUMBER	2025

New Greenfield
EXTERIOR NORTH ELEVATION

A2.03

2025 (drawn) 03/03/2025 13:05:41

